

**CHANGING
THE
INDUSTRY
BY
LISTENING**

ALAN GARCIA-RAMOS

Science Proves: Pop Music Has Actually Gotten Worse

Science confirms what you've always suspected: music these days is worse than it used to be.

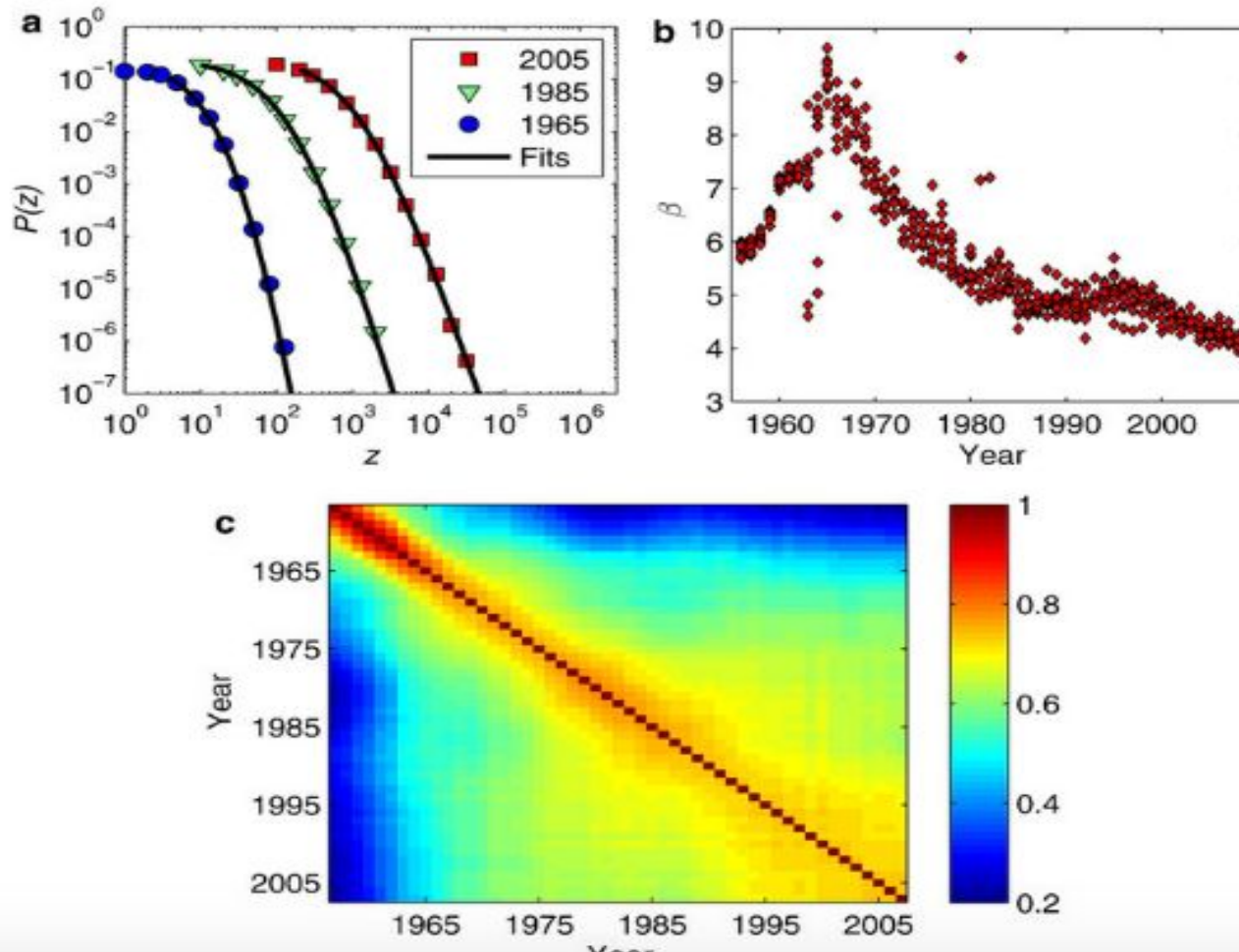
By [Rose Eveleth](#)

SMITHSONIAN.COM

JULY 27, 2012

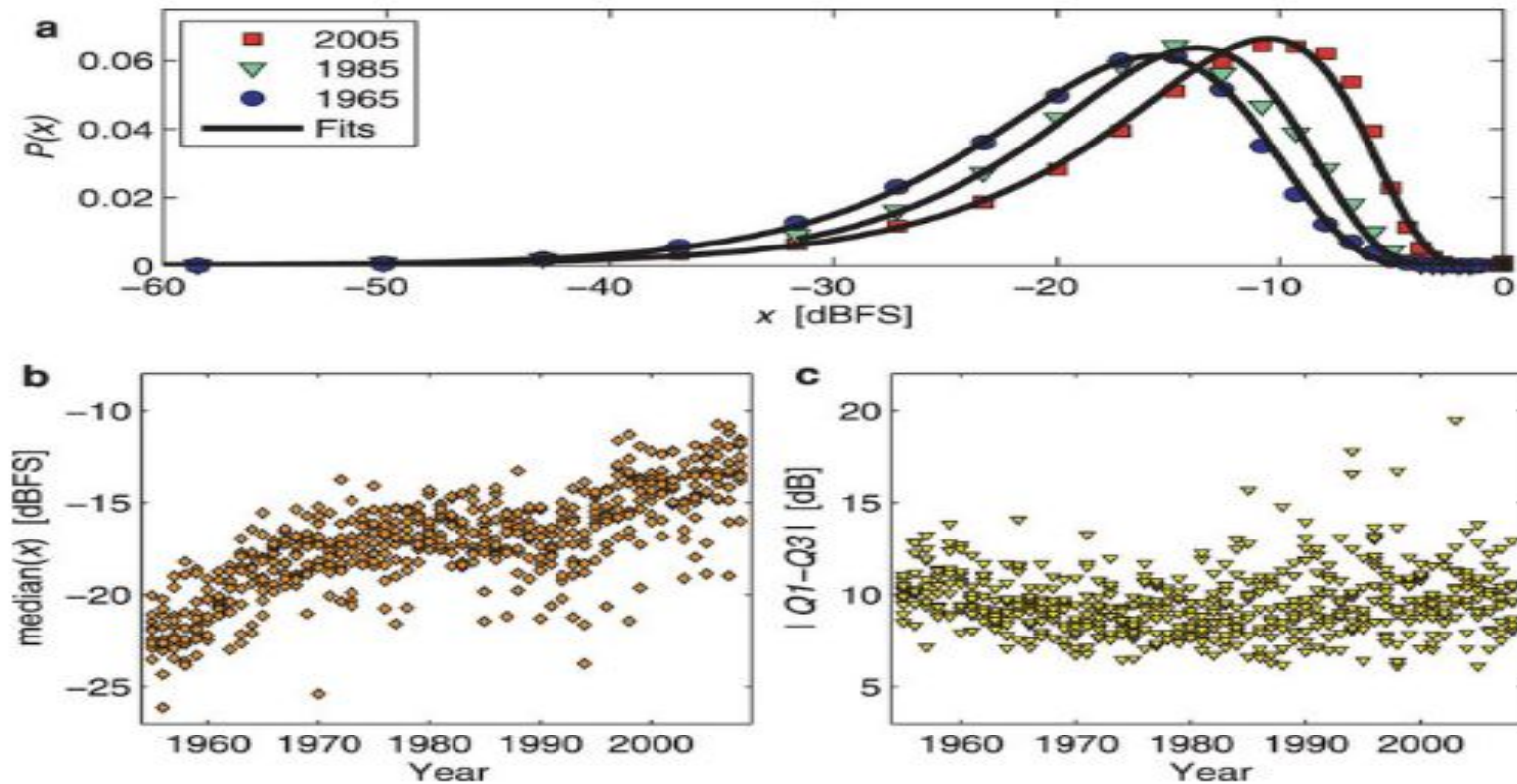
TIMBRE VARIETY AND PITCH DISTRIBUTION IN STEADY DECLINE

Figure 3: Timbre distributions.



LOUDNESS INCREASING

Figure 4: Loudness distributions.



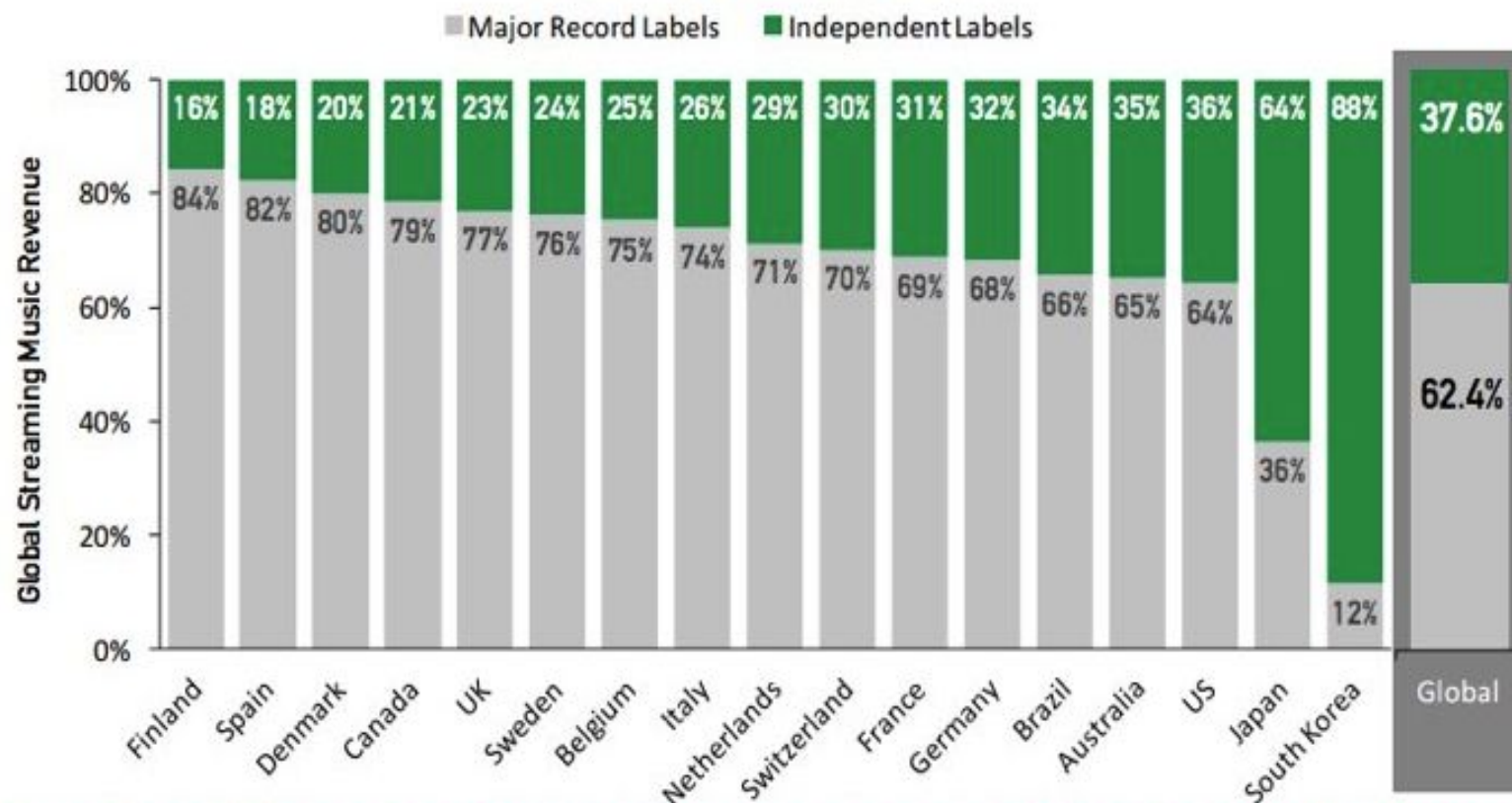
(a) Examples of the density values and fits of the loudness variable x . (b) Empiric distribution medians. (c) Dynamic variability, expressed as absolute loudness differences between the first and third quartiles of x , $|Q_1 - Q_3|$.

WHY IS THIS HAPPENING?

Two-Thirds of All Music Sold Comes from Just 3 Companies

Paul Resnikoff August 3, 2016 4

GLOBAL RECORDED MUSIC REVENUE SHARE FOR MAJOR AND INDEPENDENT LABELS BY OWNERSHIP

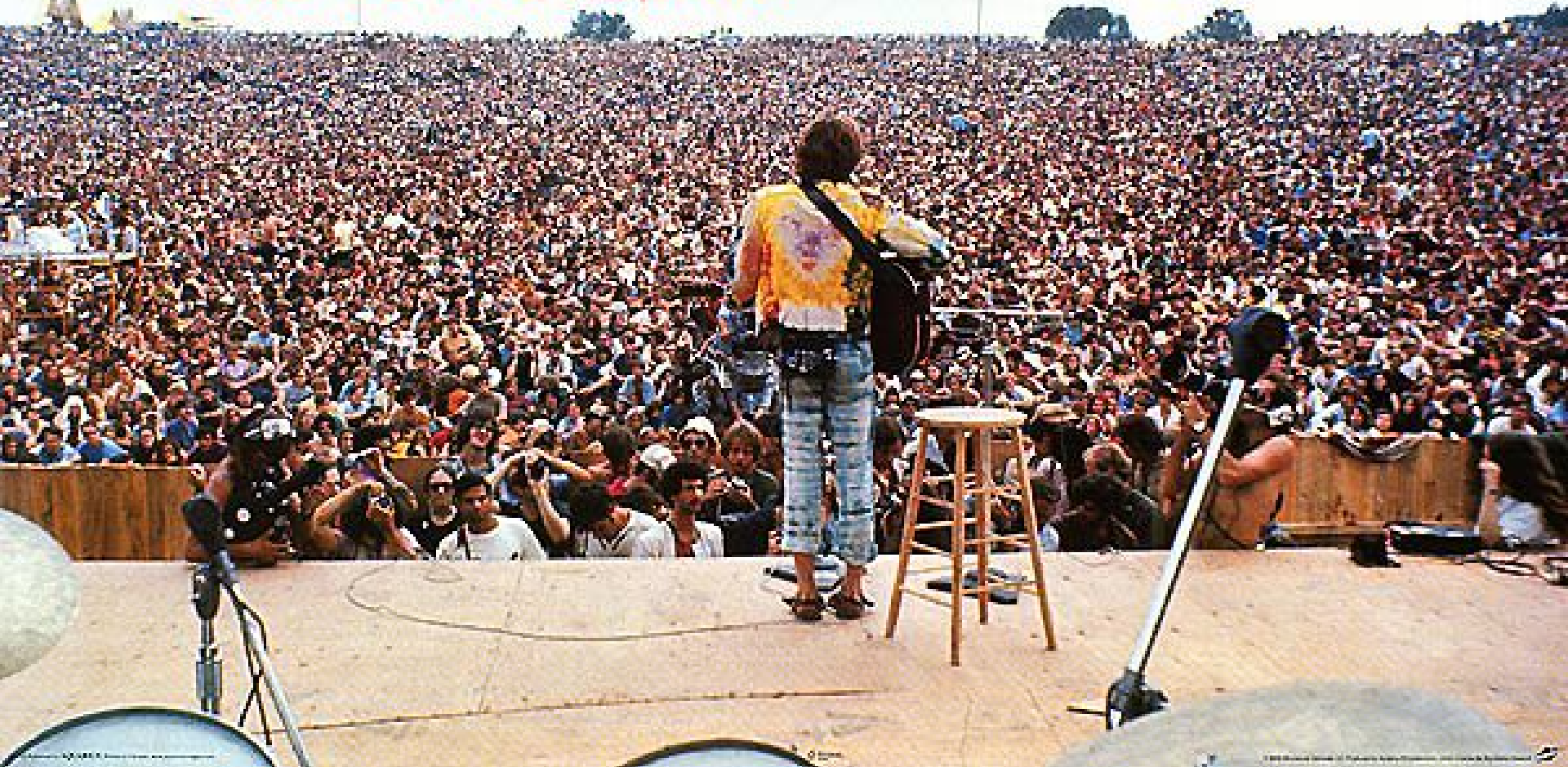
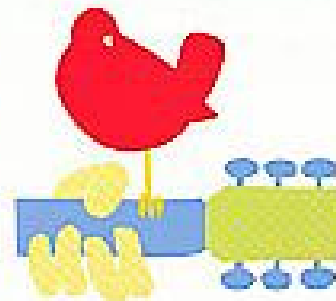


Source: WIN / MIDiA Global Music Market Share Model (05/16)

THE GREAT PARADOX OF THE 21ST CENTURY

WOODSTOCK

3 DAYS OF PEACE & MUSIC 1969



THANK YOU